

# Help in a Dos Box, Version 1.00

## Contents

[Copyright](#)

[Overview](#)

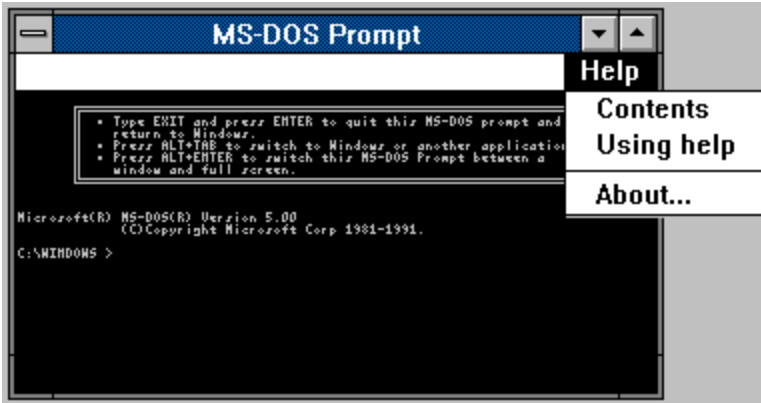
[Control Panel Set Up](#)

[Help Links](#)

[Legal Use & Distribution](#)

# Help in a Dos Box, Version 1.00

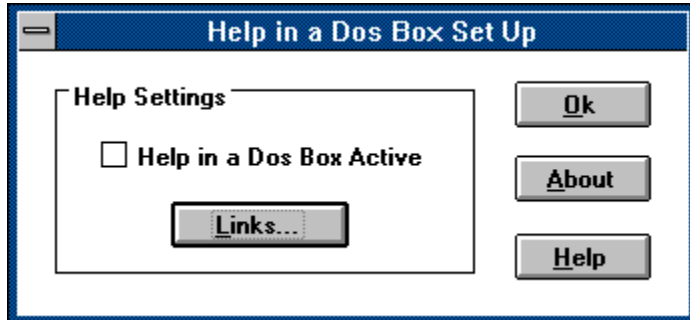
## Overview



Help in a Dos Box provides Dos Applications with on-line Help Facilities. It adds a menubar to windowed Dos Boxes in 386 enhanced mode. This menubar has one menu from which you may choose either the **Contents** of a Help file applicable to the Dos application being run, the general **Using Help** help file or an **About Box** containing copyright information. If you select the first of these WinHelp is loaded with a help file which depends on the title of the Dos Box. You must use the Control Panel Applet to link help files with Dos Box titles. You may also need the Microsoft Help Compiler to produce suitable help files.

# Help in a Dos Box, Version 1.00

## Control Panel Set-up



Use the **Check-Box** to switch the Help in a Dos Box on or off. You cannot switch Help in a Dos Box off if there are any Dos Boxes with help menus currently running on your system. Switching it on will only affect Dos Boxes created subsequently. Any Dos Applications running when you switch it on will not have Help Menus.

The **Help Button** reveals this screen.

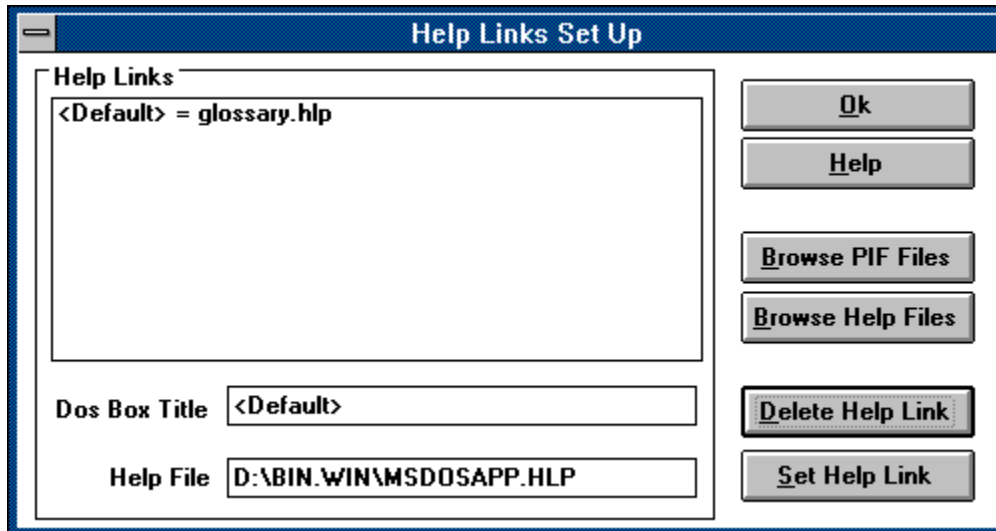
The **About Button** reveals copyright information

The **Help Links Button** takes you to the Help Links set-up dialog.

Press the **Ok Button** to return to Control Panel

## Help in a Dos Box, Version 1.00

### Help Links



Use this to link the titles of Dos Boxes with help files. Whenever the menu command Contents is chosen Help in a Dos Box looks up the window's title in a table, and if it finds it opens the linked help file, otherwise it opens the help file specified by the entry **<Default>**. The dialog allows you to edit this table.

Clicking on an item in the **Help Links ListBox** brings the Dos Box Title and Help File into the appropriate **Edit Lines**.

Pressing the **Delete Help Link** removes the selected Help Link. However you cannot delete the **<Default>** entry. **Delete Help Link** just resets this to the factory default value.

Pressing **Browse PIF Files** allows you to search the disks for a Windows PIF File, from which Help in a Dos Box can extract the Dos Box's title.

Pressing **Browse Help Files** allows you to search the disks for a Windows Help File.

Pressing **Set Help Links** adds the data in the **Edit Controls** to the **Help Links ListBox**.

Pressing **Help** brings you to this help topic.

Pressing **About** displays copyright information.

Pressing **Ok** returns you to the **Set Up dialog**.

# Help in a Dos Box, Version 1.00

## Legal Use & Distribution

Users of "Help in a Dos Box" must accept this disclaimer of warranty: "Help in a Dos Box" is supplied as is. The author disclaims all warranties, expressed or implied, including, without limitation, the warranties of merchantability and of fitness for any purpose. The author assumes no liability for damages, direct or consequential, which may result from the use of "Help in a Dos Box".

"Help in a Dos Box" is a shareware program" and is provided at no charge to the user for evaluation. Feel free to share it with your friends, but please do not give it away altered or as part of another system. The essence of "user-supported" software is to provide personal computer users with quality software without high prices, and yet to provide incentive for programmers to continue to develop new products. If you find this program useful and find that you are using "Help in a Dos Box" and continue to use "Help in a Dos Box" after a reasonable trial period, you must make a registration payment of £10 to the author. The £10 registration fee will license one copy for use on any one computer at any one time. You must treat this software just like a book. An example is that this software may be used by any number of people and may be freely moved from one computer location to another, so long as there is no possibility of it being used at one location while it's being used at another. Just as a book cannot be read by two different persons at the same time.

Commercial users of "Help in a Dos Box" must register and pay for their copies of "Help in a Dos Box" within 30 days of first use or their license is withdrawn. Site-License arrangements may be made by contacting the author.

Anyone distributing "Help in a Dos Box" for any kind of remuneration must first contact the author at the address below for authorisation. This authorisation will be automatically granted to distributors recognised by the (ASP) as adhering to its guidelines for shareware distributors, and such distributors may begin offering "Help in a Dos Box" immediately (However the author must still be advised so that the distributor can be kept up-to-date with the latest version of "Help in a Dos Box").

You are encouraged to pass a copy of "Help in a Dos Box" along to your friends for evaluation. Please encourage them to register their copy if they find that they can use it.

The author can be contacted at the following address:

Matthew J. Dovey  
19, Chingley Bank  
Henley-in-Arden  
Solihull  
West Midlands B95 5LX  
England.

E-Mail: [co93001@oxford.ac.uk](mailto:co93001@oxford.ac.uk) on JANET

Help in a Dos Box  
Version 1.00  
© Copyright 1992, M. J. Dovey

## DEFINITION OF SHAREWARE

Shareware distribution gives users a chance to try software before buying it. If you try a Shareware program and continue using it, you are expected to register. Individual programs differ on details -- some request registration while others require it, some specify a maximum trial period. With registration, you get anything from the simple right to continue using the software to an updated program with printed manual.

Copyright laws apply to both Shareware and commercial software, and the copyright holder retains all rights, with a few specific exceptions as stated below. Shareware authors are accomplished programmers, just like commercial authors, and the programs are of comparable quality. (In both cases, there are good programs and bad ones!) The main difference is in the method of distribution. The author specifically grants the right to copy and distribute the software, either to all and sundry or to a specific group. For example, some authors require written permission before a commercial disk vendor may copy their Shareware.

Shareware is a distribution method, not a type of software. You should find software that suits your needs and pocketbook, whether it's commercial or Shareware. The Shareware system makes fitting your needs easier, because you can try before you buy. And because the overhead is low, prices are low also. Shareware has the ultimate money-back guarantee -- if you don't use the product, you don't pay for it.





